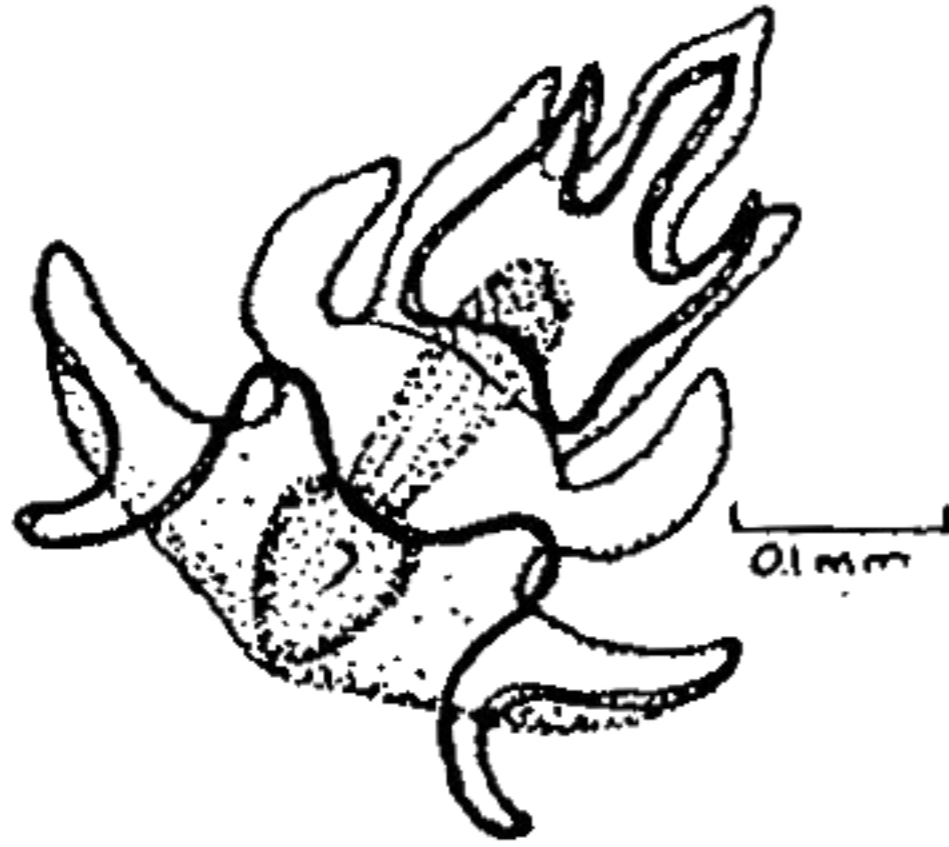


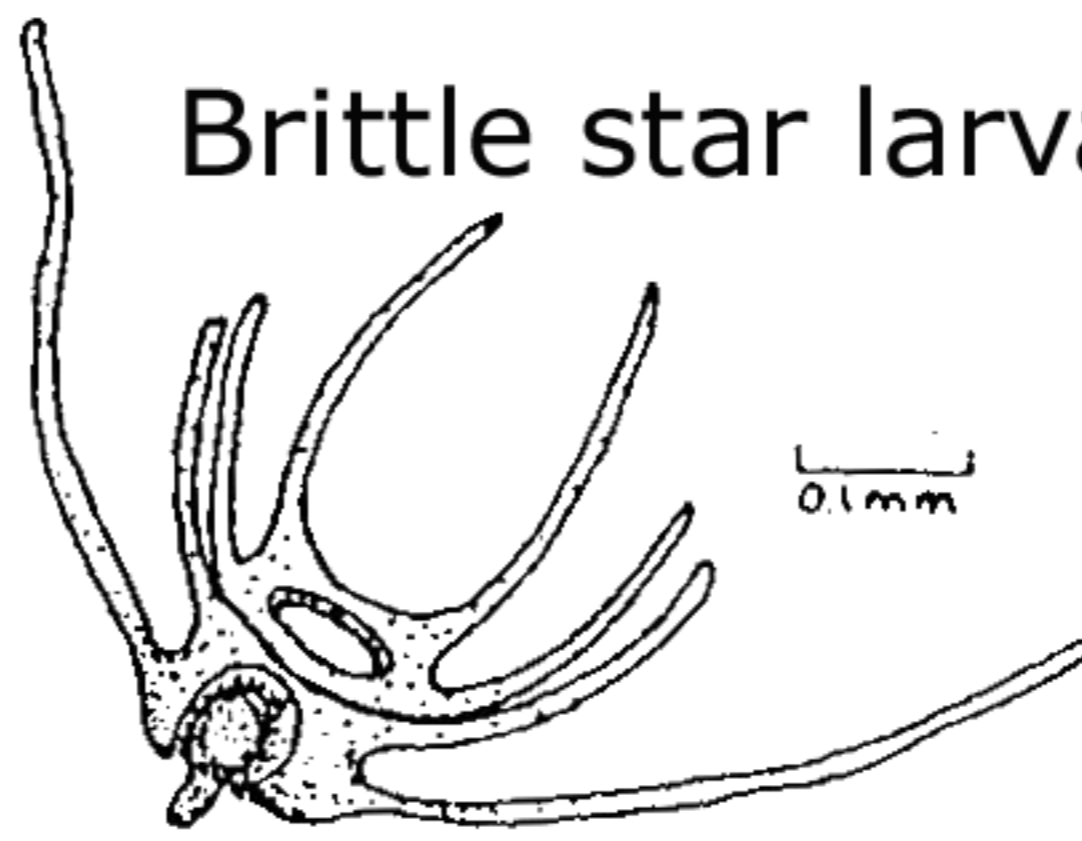
Phylum Echinodermata

Seastar larvae



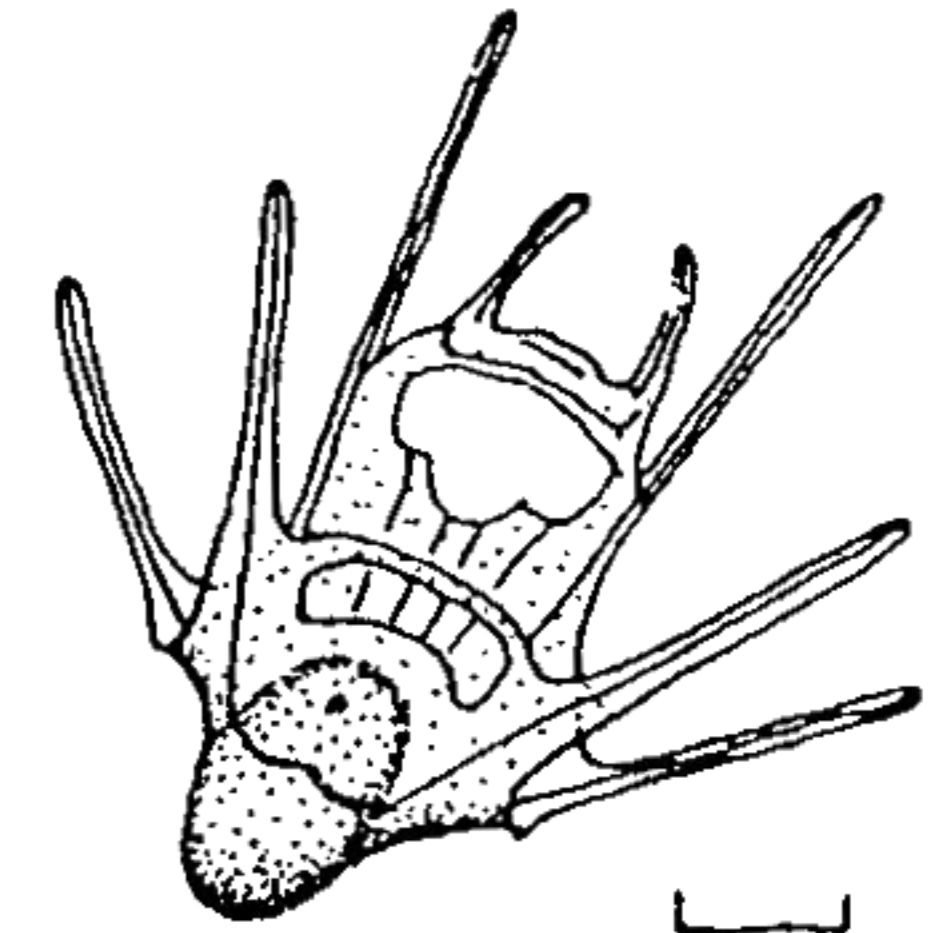
(Late bipinnaria larva)

Brittle star larva

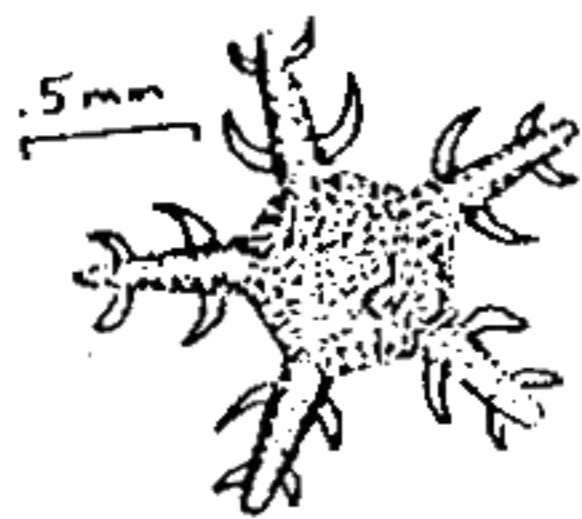


(Ophiopluteus)

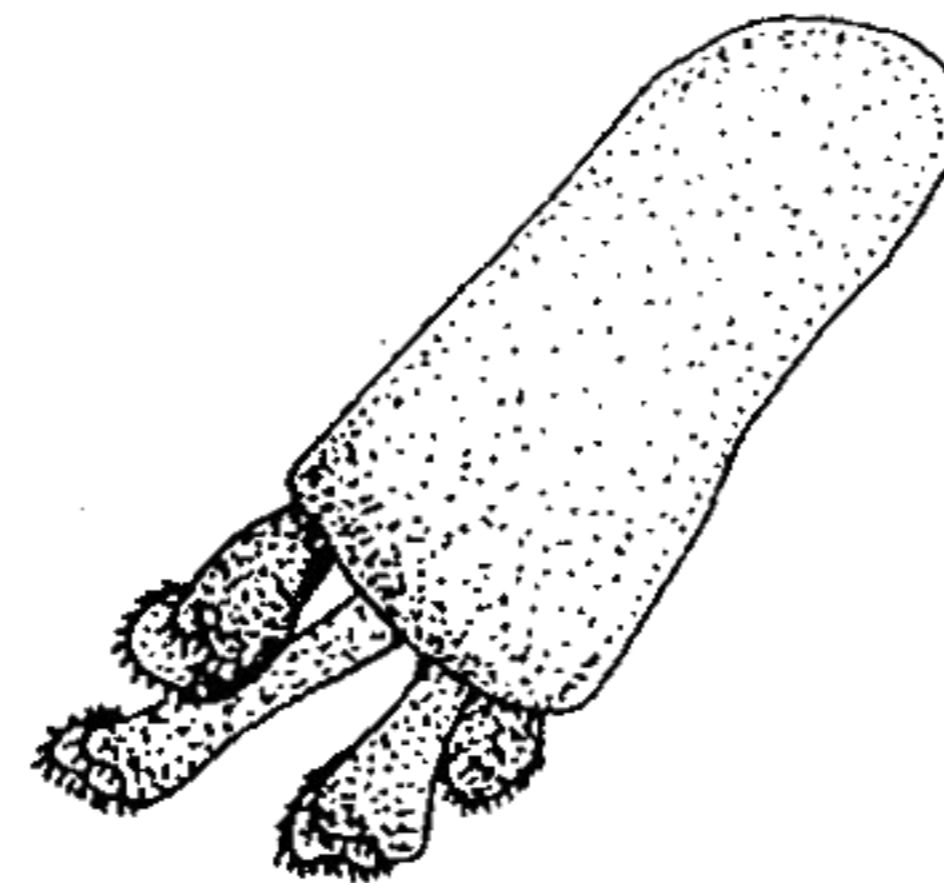
Sea urchin larva



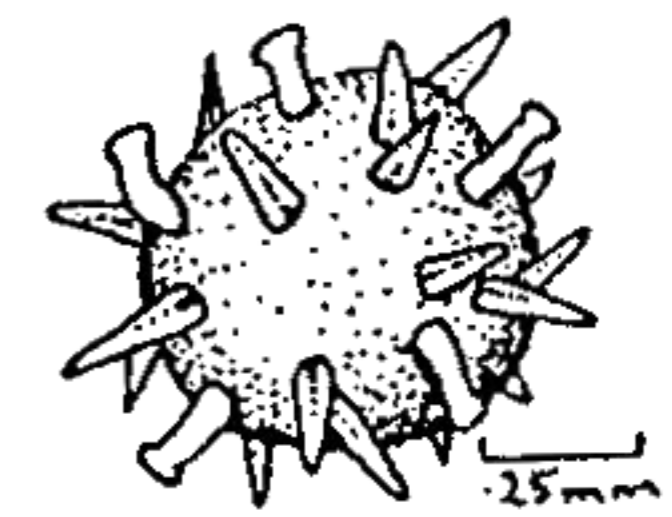
(Echinopluteus)



Seastar juvenile



Sea cucumber
pentacula

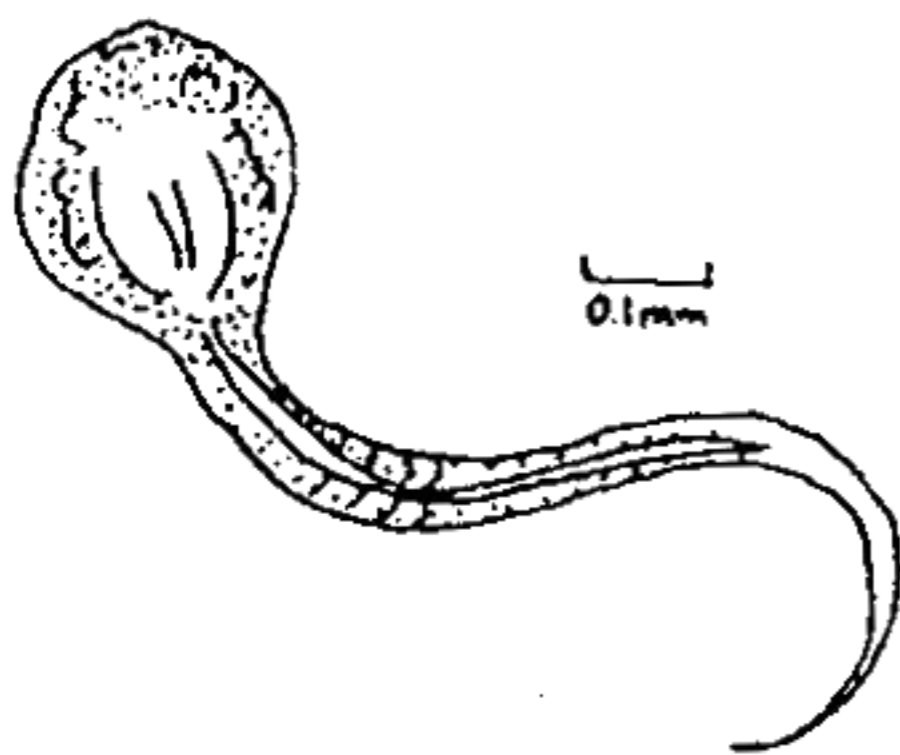


Juvenile urchin

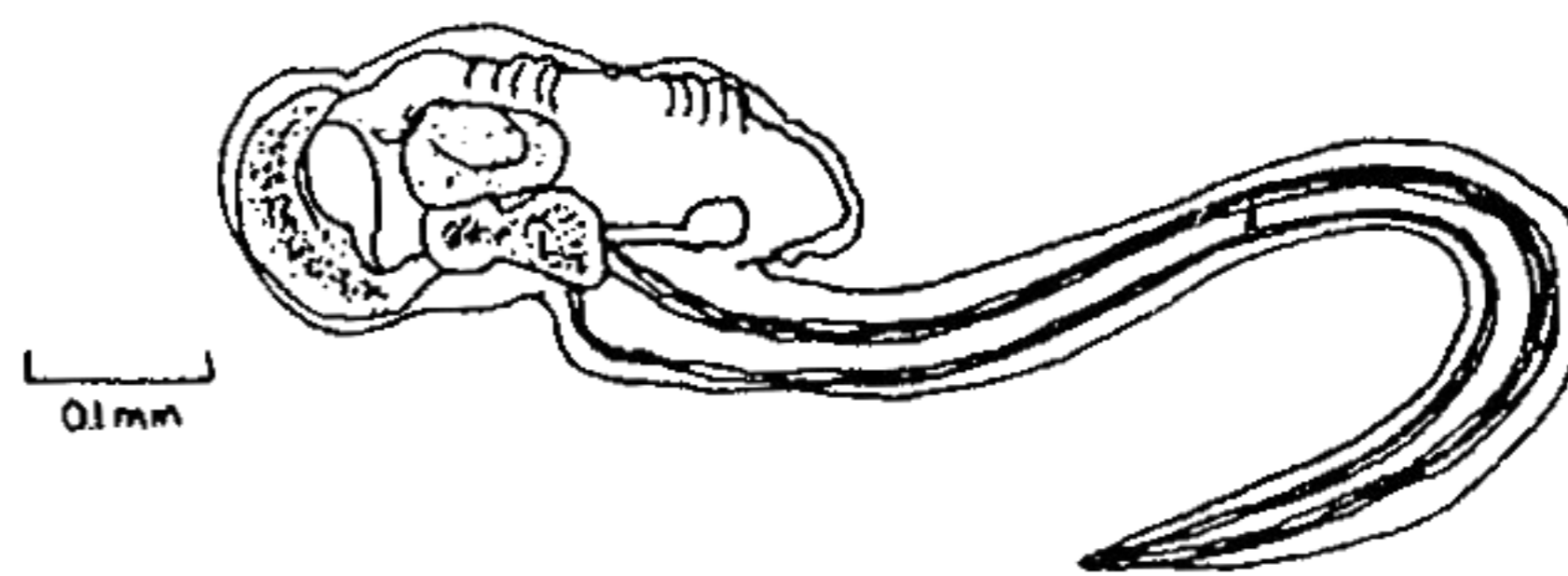
Phylum Chordata

Subphylum Urochordata

Ascidian larva
(tadpole stage)

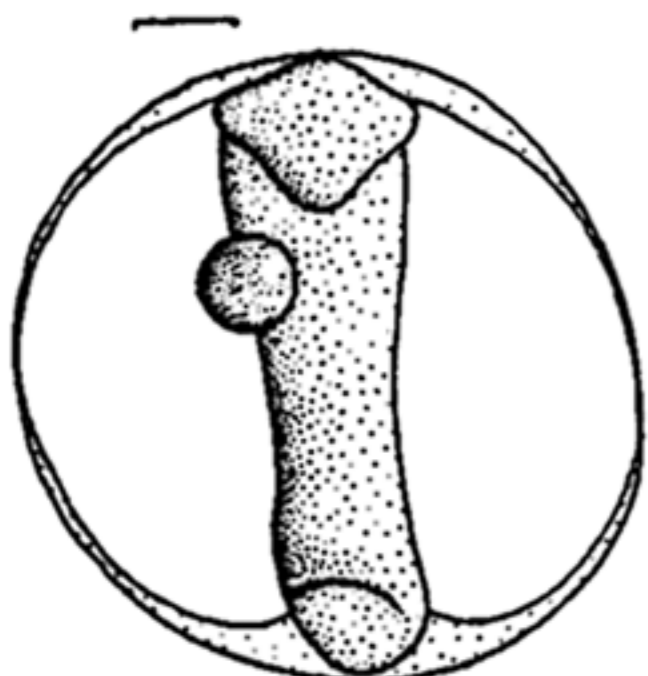


Oikopleura



Subphylum Vertebrata

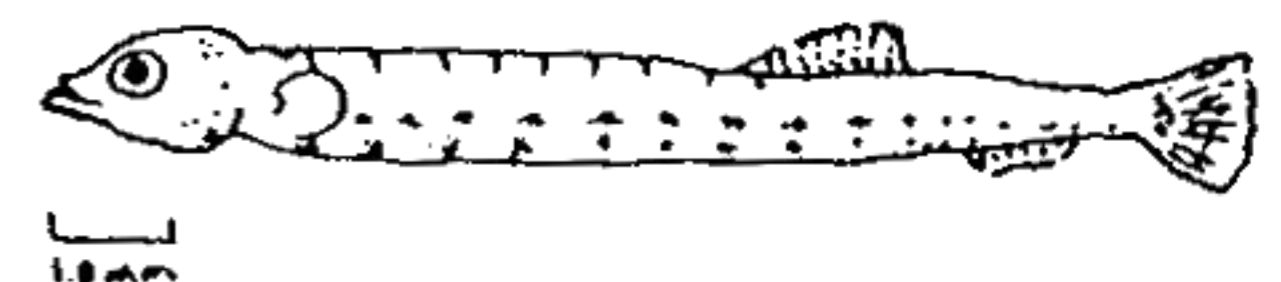
100 μ m



Fish egg



Fish larva



Herring post-larva